

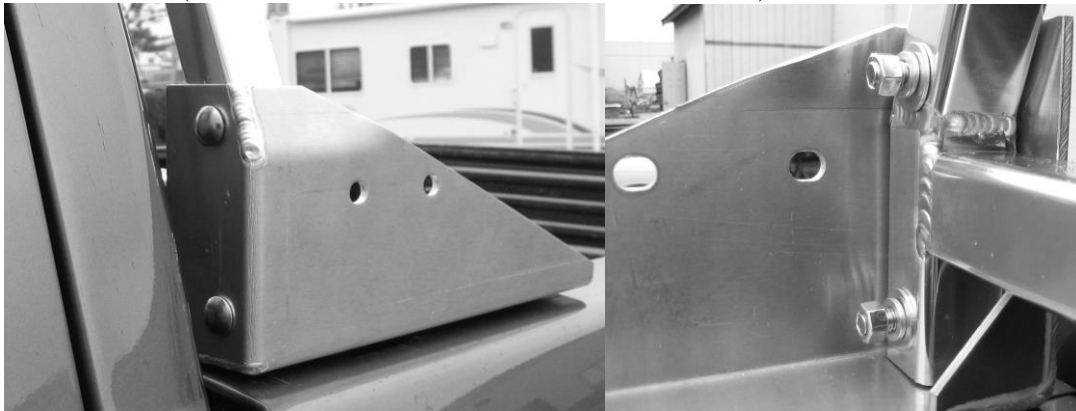
HC81111 / HC81114

PARTS LIST:

- (1) LEFT STD. FOOT
- (1) RIGHT STD. FOOT
- (4) FA112-086 – 3/8" x 2 1/2" NC GR2 CARRIAGE BOLT PLTD.
- (4) FA103-082 – 3/8" x 1 1/2" NC GR5 BOLT PLTD.
- (8) FA177-024 – 3/8" NC NUT
- (8) FA136-017 – 3/8" LOCK WASHER
- (12) FA133-017 – 3/8" FLAT WASHER

INSTALL INSTRUCTIONS:

1. HC81111 CAN BE USED WITH ANY STAND ALONE {HC81 SERIES} RACK
2. NOTE: IF YOU ARE INSTALLING A {HC812 SERIES} OR A {HC815 SERIES} RACK, MAKE SURE THAT THE TACK WELDS ON THE UPRIGHT ROUND BARS ARE FACING THE CAB :IF YOU ARE INSTALLING A {HC814 SERIES} RACK, MAKE SURE THAT THE MESH IS FACING THE BOX.
3. TAKE YOUR {HC81 SERIES} RACK, LEFT & RIGHT FEET, THE (4) FA122-086 CARRIAGE BOLTS, & (4) NUTS, LOCK WASHERS & FLAT WASHERS. LOOSELY ASSEMBLE FEET TO RACK AS SHOWN. (DO NOT TIGHTEN FEET TO RACK YET)



4. PLACE RACK IN DESIRED LOCATION, STRAIGHTEN OUT FEET & CLAMP IN PLACE.
5. USING A 7/16" DRILL BIT, DRILL (2) HOLES PER FOOT AS FAR APART AS POSSIBLE (MAKE SURE THAT YOU CAN GET THE FASTENERS ON TO THE BOTTOM SIDE OF THE BOLTS ONCE THE HOLES ARE DRILLED)
6. MOUNT FEET TO TRUCK BED USING (4) FA103-082 BOLTS & (4) NUTS, LOCK WASHERS, & FLAT WASHERS.
7. TIGHTEN FEET TO TRUCK (** TIGHTENING BY HAND TOOLS RECOMMENDED, OVER TIGHTENING MAY CAUSE BOX DAMAGE**)
8. TIGHTEN RACK TO FEET.