

# INSTRUCTIONS FOR HC81118

## HARDWARE LIST

### (1) HC818250 KIT CONTAINING

- (2) - ALUM STAKE POCKET BRACKETS
- (2) - 3/8" CLIP NUTS
- (2) - 5/8" X 1" BOLTS
- (2) - 5/8" FLAT WASHERS
- (2) - 5/8" LOCK WASHERS
- (2) - 3/8" X 4" BOLTS FULLY THREADED
- (2) - 3/8" FLAT WASHERS
- (2) - 3/8" LOCK WASHERS

### (1) HKF32009 KIT CONTAINING

- (2) - STEEL J-CLAMPS
- (2) - 3/16" ALUM SPACERS
- (2) - 5/16" FLAT WASHERS TIED
- (4) - 3/8" X 2 1/2" CARRAGE BOLTS
- (4) - 3/8" FLAT WASHERS
- (6) - 3/8" LOCK WASHERS
- (4) - 3/8" NUTS
- (2) - 3/8" X 2" BOLTS



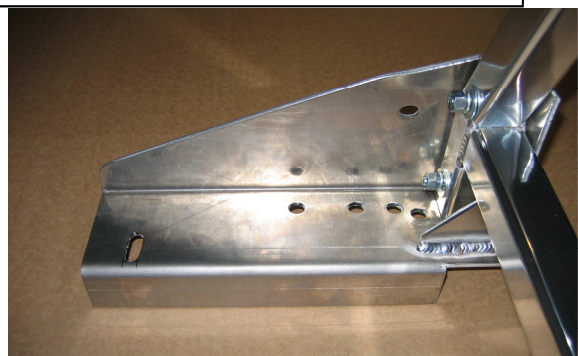
ATTACH CLIP NUTS TO ALUMINUM STAKE POCKET BRACKETS



CHECK THE FRONT STAKE POCKET ACCESS, IF COVERED, REMOVE ACCESS PANNEL



LOWER BRACKET UNTILL THE NUT IN THE BRACKET LINES UP WITH THE EXISTING HOLE ON THE INSIDE OF THE TRUCK.



WITH THE CARRAGE BOLTS, NUTS, LOCKWASHERS & FLATWASHERS, ATTACH FOOT TO RACK AS SHOWN  
HAND TIGHT ONLY



HAND THREAD 3/8" X 4" BOLT INTO STAKE POCKET BRACKET & LOWER INTO STAKE HOLE AS SHOWN.

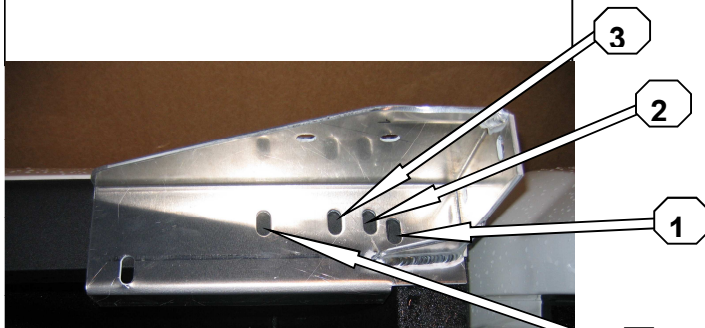


USING 5/8" X 1" BOLT, NUT, LOCKWASHER & FLATWASHER, HAND TIGHTEN BOLT THROUGH THE EXISTING HOLE INTO THE BRACKET.

# INSTRUCTIONS FOR HC81118



SNUG UP BOLT  
\*\* DO NOT FULLY TIGHTEN \*\*



FOAM TAPE MAY BE APPLIED TO BOTTOM  
OF FOOT FOR SCRATCH PROTECTION  
(FOAM TAPE NOT SUPPLIED)  
USE SPACER UNDER FOOT IF NEEDED



USE 3/8" X 2" BOLT, LOCK WASHER & 5/16"  
FLATWASHER THROUGH THE REAR  
SLOTTED HOLE WITH THE J-CLAMP ON THE  
BOTTOM SIDE \*\* HAND TIGHT \*\*



USE INDICATED BOLT THROUGH THE  
PROPER FRONT HOLE INTO STAKE  
POCKET BRACKET. TIGHTEN J-HOOK BOLT  
FIRST, THEN FRONT BOLT - FINISH  
TIGHTENING 5/8" BOLT THROUGH INSIDE  
OF BED TO STAKEPOCKET BRACKET.



MAKE SURE BRACKET IS VERTICAL INSIDE  
OF STAKE POCKET, BEFORE PLACING  
FOOT OVER TOP OF IT

FRONT MOUNT POSITION IS PRE PUNCHED

**99-07 CHEV/GM CLASSIC**  
FRONT RACK: USE HOLE (3)  
3/8"X4" BOLT  
REAR RACK:

**07-\*\* CHEV/GM**  
FRONT RACK: USE HOLE (4)  
3/8"X4" BOLT  
REAR RACK: USE HOLE (2)  
3/8"X4" BOLT

**03-08 DODGE & 09 DODGE H/D**  
FRONT RACK: USE HOLE (2)  
3/8"X4" BOLT  
REAR RACK: USE HOLE (1)  
3/8"X4" BOLT

**09-\*\* DODGE 1500**  
FRONT RACK: USE HOLE (2)  
3/8"X4" BOLT  
REAR RACK:

**99-09 FORD S/D**  
FRONT RACK: USE HOLE (4)  
3/8"X4" BOLT  
REAR RACK:

**04-09 F150**  
\*\* SPACER IS REQUIRED ON 09 F150 UNDER FOOT \*\*  
FRONT RACK: USE HOLE (1)  
3/8"X4" BOLT  
REAR RACK: MUST PURCHASE EXTRA  
BRACKET # XXXXXX

**\* FOR NO DRILL CROSSOVER TOOLBOX  
FOOT (HC81122) \***

USE FRONT MOUNT HOLE AS ABOVE.  
THERE WILL BE (2) J-CLAMPS PER SIDE  
TO HOLD TOOLBOX & BACK END OF FOOT