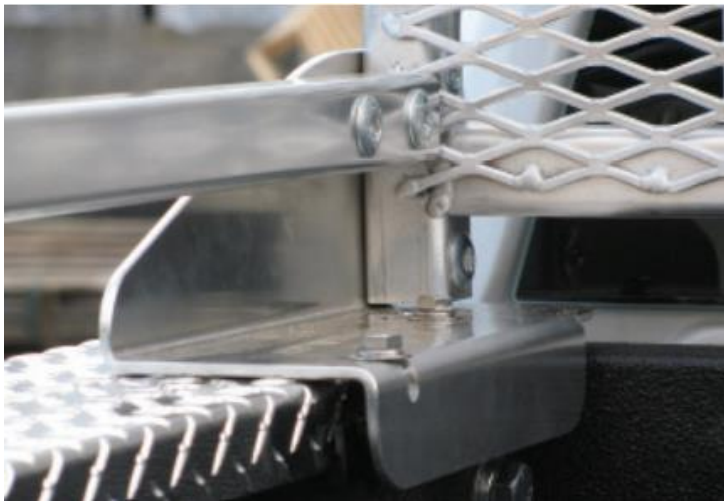


HI-LITE

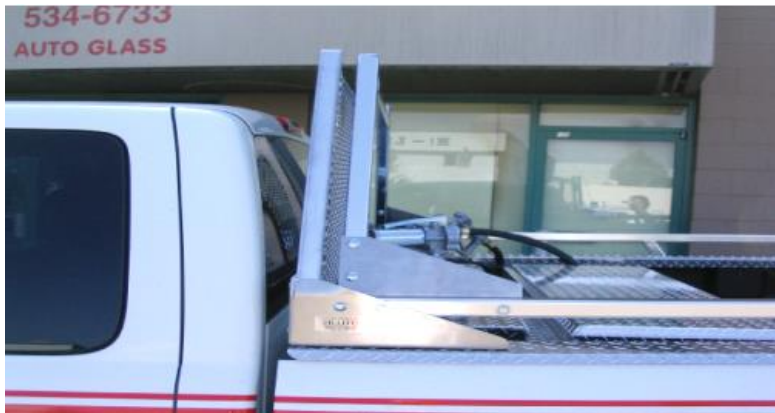
TRUCK ACCESSORIES

- 1 1/2" SQUARE ANODIZED ALUMINUM TUBE, 1/8" THICK, WELDED TO CHECKER PLATE BED CAPS.
- RAILS DESIGNED TO BE MOUNTED IN CONJUNCTION WITH HI-LITE CAB GUARD.
- MOUNT FOOT FOR REAR RACKS PURCHASED SEPARATELY.

RACK RAILS & REAR RACKS



CHEVROLET



REAR RACK

+MOUNT FOOT

REAR RACK+

MOUNT FOOT

YEAR	MODLE	BED STYLE	FULL LENTH RAILS WELDED TO C/P BED CAPS	REAR RACK TO FIT W/ RAILS	FOOT FOR REAR RACK W/ RAILS	REAR RACK STAND ALONE	STANDARD FIT	STANDARD NO-DRILL FOOT
CHEV SILVERADO								
19-24	SILVERADO 1500	8'	HC111-181	HC417-173	HC41113	HC416-173	HC41111	HC41120
		6'6"	HC111-182	HC417-173	HC41113	HC416-173	HC41111	HC41120
		5'5"	HC111-184	HC417-173	HC41113	HC416-173	HC41111	HC41120
14-18	SILVERADO 1500	8'	HC111-143	HC817-143	HC81113	HC816-143	HC81111	HC81118
		6'6"	HC111-144	HC817-143	HC81113	HC816-143	HC81111	HC81118
		5'5"	HC111-146	HC817-143	HC81113	HC816-143	HC81111	HC81118
07-13	SILVERADO 1500	8'	HC111-115	HC81703	HC81113	HC81603	HC81111	HC81118
		6'6"	HC111-116	HC81703	HC81113	HC81603	HC81111	HC81118
		5'5"	HC111-118	HC81703	HC81113	HC81603	HC81111	HC81118
99-07	SILVERADO 1500 (CLASSIC)	8'	HC11165	HC81703	HC81113	HC81603	HC81111	HC81118
		6'6"	HC11166	HC81703	HC81113	HC81603	HC81111	HC81118
		5'5"	HC11167	HC81703	HC81113	HC81603	HC81111	HC81118
		STEPSIDE	N/A	N/A	N/A	N/A	N/A	N/A
20-24	SILVERADO 25/3500HD	DUAL	N/A	N/A	N/A	HC416-185	HC41111	TBA
		8'	HC111-185	HC417-185	HC41113	HC416-185	HC41111	HC41120
		6'6"	HC111-186	HC417-185	HC41113	HC416-185	HC41111	HC41120
15-19	SILVERADO 25/3500HD	DUAL	HC111-147	HC817-143	HC81113	HC816-143	HC81111	HC81118
		8'	HC111-143	HC817-143	HC81113	HC816-143	HC81111	HC81118
		6'6"	HC111-144	HC817-143	HC81113	HC816-143	HC81111	HC81118
07-14	SILVERADO 25/3500HD	DUAL	HC111-121 (1)	HC81703	HC81113	HC81603	HC81111	HC81118
		8'	HC111-115	HC81703	HC81113	HC81603	HC81111	HC81118
		6'6"	HC111-116	HC81703	HC81113	HC81603	HC81111	HC81118
00-07	SILVERADO 25/3500HD {CLASSIC}	DUAL	HC11171	HC81703	HC81113	HC81603	HC81111	HC81118
		8'	HC11165	HC81703	HC81113	HC81603	HC81111	HC81118
		6'6"	HC11166	HC81703	HC81113	HC81603	HC81111	HC81118
88-89	SILVERADO + 99-00 HD	8'	HC11103	HC81703	HC81113	HC81603	HC81111	HC81118
		6'6"	HC11104	HC81703	HC81113	HC81603	HC81111	HC81118
		STEPSIDE	HC11115	N/A	N/A	N/A	N/A	N/A
73-87	SILVERADO + 88-91 HD	8'	HC11101	HC81701	HC81113	HC81601	HC81111	HC81118
		6'6"	HC11106	HC81701	HC81113	HC81601	HC81111	HC81118
		STEPSIDE	N/A	N/A	N/A	N/A	N/A	N/A
67-72	CHEV PICK UP	8'	N/A	N/A	N/A	N/A	N/A	N/A
		6'6"	N/A	N/A	N/A	N/A	N/A	N/A
		STEPSIDE	N/A	N/A	N/A	N/A	N/A	N/A
COLORADO								
15-24	COLORADO	74" BED	HC111-159	HC417-159	HC41113	HC416-159	HC41111	N/A
		62" BED	HC111-160	HC417-159	HC41113	HC416-159	HC41111	N/A
04-12	COLORADO	6'	HC111182	HC81781	HC81113	HC81681	HC81111	N/A
		5'	HC111184	HC81781	HC81113	HC81681	HC81111	N/A
		STEPSIDE	N/A	N/A	N/A	N/A	N/A	N/A
S10/S15 PICKUP								
94-03	S10/S15 PICK UP	7'	N/A	N/A	N/A	HC81649	HC81111	N/A
		6'	HC11150	HC1749	HC81113	HC81649	HC81111	N/A
82-93	S10/S15 PICK UP	7'	N/A	N/A	N/A	N/A	N/A	N/A
		6'	N/A	N/A	N/A	N/A	N/A	N/A

(1) THESE CAPS DO NOT HAVE AN OUTSIDE BEND & A SLIGHT DISTORTION MAY OCCUR DURING THE WELDING PROCEDURE

(*) RAILS ARE AVAILABLE WITHOUT AN INNER LIP / ADD -BF TO PART # (THIS WILL FIT WITH BAK FLIP)

(*) ADD "-T" TO PART# TO FIT WITH A CROSS BED TOOL BOX / (SQUARE TIE DOWN RAILS WILL STOP SHORT OF TOOL BOX)

DODGE/RAM



REAR RACK

+MOUNT FOOT

REAR RACK+

MOUNT FOOT

YEAR	MODLE	BED STYLE	FULL LENTH RAILS WELDED TO C/P BED CAPS	REAR RACK TO FIT W/ RAILS	FOOT FOR REAR RACK W/ RAILS	REAR RACK STAND ALONE	STANDARD FIT	STANDARD NO-DRILL FOOT
DODGE/RAM Full Size Pick Up								
19-24 NEW	RAM 1500	8'	N/A	N/A	N/A	HC416-169	HC41111	N/A
		6'6"	HC111-170	HC417-169	HC41113	HC416-169	HC41111	N/A
		5'5"	HC111-172	HC417-169	HC41113	HC416-169	HC41111	N/A
09-18 19-24 CLASSIC	RAM 1500 ** no fit RAM box**	8'	HC111-137	HC817-137	HC81113	HC816-137	HC81111	HC81118
		6'6"	HC111-138	HC817-137	HC81113	HC816-137	HC81111	HC81118
		5'5"	HC111-140	HC817-137	HC81113	HC816-137	HC81111	N/A
02-08	RAM 1500	8'	HC11173	HC81773	HC81113	HC81673	HC81111	HC81118
		6'6"	HC11174	HC81773	HC81113	HC81673	HC81111	HC81118
10-24	RAM 2500/3500	DUAL 8'	HC111-141	HC817-137	HC81113	HC816-137	HC81111	HC81118
		8'	HC111-137	HC817-137	HC81113	HC816-137	HC81111	HC81118
		DUAL 6.5'	HC111-142	HC817-137	HC81113	HC816-137	HC81111	HC81118
		6'6"	HC111-138	HC817-137	HC81113	HC816-137	HC81111	HC81118
09-24	All RAM bed models	ALL	N/A	N/A	N/A	N/A	N/A	N/A
03-09	RAM 2500/3500	8'+DUAL	HC11173	HC81773	HC81113	HC81673	HC81111	HC81118
		6'6"	HC11174	HC81773	HC81113	HC81673	HC81111	HC81118
94-01	RAM + 02 HD	8'	HC11146	HC81746	HC81113	HC81646	HC81111	N/A
		6'6"	HC11147	HC81746	HC81113	HC81646	HC81111	N/A
72-93	RAM	8'	HC11107	HC81707	HC81113	HC81607	HC81111	N/A
		6'6"	HC11108	HC81707	HC81113	HC81607	HC81111	N/A
72-93	STEPSIDE	6'6"	N/A	N/A	N/A	N/A	N/A	N/A
DAKOTA								
05-11	DAKOTA	76"	HC11186	HC81786	HC81113	N/A	N/A	N/A
		63"	HC11188	HC81786	HC81113	N/A	N/A	N/A
97-04	DAKOTA	7'	HC11161	HC81761	HC81113	HC81661	HC81111	N/A
		6'	HC11162	HC81761	HC81113	HC81661	HC81111	N/A
00-04	DAKOTA	5'	HC11176	N/A	N/A	N/A	N/A	N/A
87-96	DAKOTA	7'	N/A	N/A	N/A	HC81617	HC81111	N/A
		6	HC11118	HC81777	HC81113	HC81617	HC81111	N/A
87-96	Li'l Red Wagon	Custom Bed	N/A	N/A	N/A	N/A	N/A	N/A
RAM 50								
86-96	RAM 50 PICK UP	7'	N/A	N/A	N/A	N/A	N/A	N/A
		6'	N/A	N/A	N/A	N/A	N/A	N/A
(*) RAILS ARE AVAILABLE WITHOUT AN INNER LIP / ADD -NL TO PART# (THIS WILL FIT WITH A PLYWOOD BED LINER)/ ADD -BF TO PART # (THIS WILL FIT WITH BAK FLIP)								
(*) ADD "-T" TO PART# TO FIT WITH A CROSS BED TOOL BOX / (SQUARE TIE DOWN RAILS WILL STOP SHORT OF TOOL BOX)								

FORD



REAR RACK

+MOUNT FOOT

REAR RACK+

MOUNT FOOT

YEAR	MODLE	BED STYLE	FULL LENTH RAILS WELDED TO C/P BED CAPS	REAR RACK TO FIT W/ RAILS	FOOT FOR REAR RACK W/ RAILS	REAR RACK STAND ALONE	STANDARD FIT	STANDARD NO-DRILL FOOT
FORD F-SERIES								
23-24	FORD SUPER DUTY	8'	HC111-205	HC417-165	HC41113	HC416-165	N/A	HC41121
		6'6"	HC111-206	HC417-165	HC41113	HC416-165	N/A	HC41121
22-24	MAVERICK	4'	HC111-200	HC417-201	HC41113	HC416-201	N/A	HC41121
21-24	F150 (ALUMINUM)	8'	HC111-193	HC417-155	HC41113	HC416-155	N/A	HC41121
		6'6"	HC111-194	HC417-155	HC41113	HC416-155	N/A	HC41121
		5'5"	HC111-196	HC417-155	HC41113	HC416-155	N/A	HC41121
15-20	F150 (ALUMINUM)	8'	HC111-155	HC417-155	HC41113	HC416-155	N/A	HC41121
		6'6"	HC111-156	HC417-155	HC41113	HC416-155	N/A	HC41121
		5'5"	HC111-158	HC417-155	HC41113	HC416-155	N/A	HC41121
09-14	F150	8'	HC111-133	HC817-133	HC81113	HC816-133	HC81111	HC81119
		6'6"	HC111-134	HC817-133	HC81113	HC816-133	HC81111	HC81119
		5'5"	HC111-136	HC817-133	HC81113	HC816-133	HC81111	HC81119
04-08	F150	8'	HC11177	HC81777	HC81113	HC81677	HC81111	HC81119
		6'6"	HC11178	HC81777	HC81113	HC81677	HC81111	HC81119
		5'5"	HC11179	HC81777	HC81113	HC81677	HC81111	HC81119
97-03	F150	8'	HC11155	HC81755	HC81113	HC81655	HC81111	N/A
		6'6"	HC11156	HC81755	HC81113	HC81655	HC81111	N/A
		5'6"	HC11158	HC81755	HC81113	HC81655	HC81111	N/A
		FLAIRSIDE	N/A	N/A	N/A	N/A	N/A	N/A
17-24	F250-F350 (ALUMINUM)	8'+DUAL	HC111-165	HC417-165	HC41113	HC416-165	N/A	HC41121
		6'6"	HC111-166	HC417-165	HC41113	HC416-165	N/A	HC41121
99-16	F250/F350	8'+DUAL	HC11163	HC81763	HC81113	HC81663	HC81111	HC81118
		6'6"	HC11164	HC81763	HC81113	HC81663	HC81111	HC81118
73-96	F-SERIES All Models +97-98HD	8'+DUAL	HC111101	HC81701	HC81113	HC81601	HC81111	N/A
		6'6"	HC11102	HC81701	HC81113	HC81601	HC81111	N/A
		FLAIRSIDE	N/A	N/A	N/A	N/A	N/A	N/A
72 & OLDER	F-SERIES All Models	Any bed style	N/A	N/A	N/A	N/A	N/A	N/A
RANGER								
19-23	RANGER	6'	HC111-178	HC417-159	HC41113	HC416-159	HC41111	N/A
		5'	HC111-180	HC417-159	HC41113	HC416-159	HC41111	N/A
93-12	RANGER	7'	HC11141	HC81741	HC81111	HC81641	HC81111	N/A
		6'	HC11142	HC81741	HC81111	HC81641	HC81111	N/A
93-98	RANGER	Splash	N/A	N/A	N/A	N/A	N/A	N/A
82-92	RANGER	7'	HC11109	HC81741	HC81113	HC81641	HC81111	N/A
		6'	HC11110	HC81741	HC81113	HC81641	HC81111	N/A
EXPLORER SPORT TRAC								
01-10	SPORTS TRAC	5'	N/A	N/A	N/A	N/A	N/A	N/A

(*) RAILS ARE AVAILABLE WITHOUT AN INNER LIP / ADD -NL TO PART# (THIS WILL FIT WITH A PLYWOOD BED LINER)/ ADD -BF TO PART # (THIS WILL FIT WITH BAK FLIP)

(*) ADD "-T" TO PART# TO FIT WITH A CROSS BED TOOL BOX / (SQUARE TIE DOWN RAILS WILL STOP SHORT OF TOOL BOX)

GMC



REAR RACK

+MOUNT FOOT

REAR RACK+

MOUNT FOOT

YEAR	MODLE	BED STYLE	FULL LENTH RAILS WELDED TO C/P BED CAPS	REAR RACK TO FIT W/ RAILS	FOOT FOR REAR RACK W/ RAILS	REAR RACK STAND ALONE	STANDARD FIT	STANDARD NO-DRILL FOOT
GMC SIERRA								
19-24	SIERRA 1500	8'	HC111-173	HC417-173	HC41113	HC416-173	HC41111	HC41120
		6'6"	HC111-174	HC417-173	HC41113	HC416-173	HC41111	HC41120
		5'5"	HC111-176	HC417-173	HC41113	HC416-173	HC41111	HC41120
14-18	SIERRA 1500	8'	HC111-143	HC817-143	HC81113	HC816-143	HC81111	HC81118
		6'6"	HC111-144	HC817-143	HC81113	HC816-143	HC81111	HC81118
		5'5"	HC111-146	HC817-143	HC81113	HC816-143	HC81111	HC81118
07-13	SIERRA 1500	8'	HC111-143	HC817-143	HC81113	HC816-143	HC81111	HC81118
		6'6"	HC111-144	HC817-143	HC81113	HC816-143	HC81111	HC81118
		5'5"	HC111-146	HC817-143	HC81113	HC816-143	HC81111	HC81118
99-07	SIERRA 1500 (CLASSIC)	8'	HC11165	HC81703	HC81113	HC81603	HC81111	HC81118
		6'6"	HC11166	HC81703	HC81113	HC81603	HC81111	HC81118
		5'5"	HC11167	HC81703	HC81113	HC81603	HC81111	HC81118
		STEPSIDE	N/A	N/A	N/A	N/A	N/A	N/A
20-24	SIERRA 25/3500 HD	DUAL	N/A	N/A	N/A	HC416-185	HC41111	HC41120
		8'	HC111-185	HC417-185	HC41113	HC416-185	HC41111	HC41120
		6'	HC111-186	HC417-185	HC41113	HC416-185	HC41111	HC41120
15-19	SIERRA 25/3500 HD	DUAL	HC111-147	HC817-143	HC81113	HC816-143	HC81111	HC81118
		8'	HC111-143	HC817-143	HC81113	HC816-143	HC81111	HC81118
		6'	HC111-144	HC817-143	HC81113	HC816-143	HC81111	HC81118
07-14	SIERRA 25/3500 HD	DUAL	HC11171	HC81703	HC81113	HC81603	HC81111	HC81118
		8'	HC11165	HC81703	HC81113	HC81603	HC81111	HC81118
		6'	HC11166	HC81703	HC81113	HC81603	HC81111	HC81118
		5'5"	HC11167	HC81703	HC81113	HC81603	HC81111	HC81118
00-07	SIERRA 25/3500 HD (CLASSIC)	DUAL	HC11171	HC81703	HC81113	HC81603	HC81111	HC81118
		8'	HC11165	HC81703	HC81113	HC81603	HC81111	HC81118
		6'6"	HC11166	HC81703	HC81113	HC81603	HC81111	HC81118
88-89	SIERRA 99-00 HD	8'	HC11103	HC81703	HC81113	HC81603	HC81111	HC81118
		6'6"	HC11104	HC81703	HC81113	HC81603	HC81111	HC81118
		STEPSIDE	HC11115	N/A	N/A	N/A	N/A	N/A
73-87	SIERRA + 88-91 HD	8'	HC11101	HC81701	HC81113	HC81601	HC81111	HC81118
		6'6"	HC11106	HC81701	HC81113	HC81601	HC81111	HC81118
		STEPSIDE	N/A	N/A	N/A	N/A	N/A	N/A
67-72	GMC PICK UP	8'	N/A	N/A	N/A	N/A	N/A	N/A
		6'6"	N/A	N/A	N/A	N/A	N/A	N/A
		STEPSIDE	N/A	N/A	N/A	N/A	N/A	N/A
CANYON								
15-24	CANYON	74" bed	HC111-159	HC417-159	HC41113	HC416-159	HC41111	N/A
		62" bed	HC111-160	HC417-159	HC41113	HC416-159	HC41111	N/A
04-12	CANYON	6'	HC111182	HC81781	HC81113	HC81681	HC81111	N/A
		5'	HC111184	HC81781	HC81113	HC81681	HC81111	N/A
		STEPSIDE	N/A	N/A	N/A	N/A	N/A	N/A
S10/S15 PICKUP								
94-03	S10/S15 PICK UP	7'	N/A	N/A	N/A	HC81649	HC81111	N/A
		6'	HC11150	HC1749	HC81113	HC81649	HC81111	N/A
82-93	S10/S15 PICK UP	7'	N/A	N/A	N/A	N/A	N/A	N/A
		6'	N/A	N/A	N/A	N/A	N/A	N/A

(1) THESE CAPS DO NOT HAVE AN OUTSIDE BEND & A SLIGHT DISTORTION MAY OCCUR DURING THE WELDING PROCEDURE

(*) RAILS ARE AVAILABLE WITHOUT AN INNER LIP / ADD -NL TO PART# (THIS WILL FIT WITH A PLYWOOD BED LINER)/ ADD -BF TO PART # (THIS WILL FIT WITH BAK FLIP)

(*) ADD "-T" TO PART# TO FIT WITH A CROSS BED TOOL BOX / (SQUARE TIE DOWN RAILS WILL STOP SHORT OF TOOL BOX)



IMPORT



REAR RACK + MOUNT FOOT

REAR RACK+

MOUNT FOOT

YEAR	MODEL	BED STYLE	FULL LENGTH RAILS WELDED TO C/P BED CAPS	REAR RACK TO FIT W/ RAILS	FOOT FOR REAR RACK W/ RAILS	REAR RACK STAND ALONE	STANDARD FIT	STANDARD NO-DRILL FOOT
HONDA								
15-24	RIDGELINE	ALL	N/A	N/A	N/A	N/A	N/A	N/A
06-14	RIDGELINE	ALL	N/A	N/A	N/A	N/A	N/A	N/A
ISUZU								
All Years	Any ISUZU Pick Up	ALL	N/A	N/A	N/A	N/A	N/A	N/A
MAZDA								
98-11	B-SERIES PICK UP	7'	N/A	N/A	N/A	N/A	N/A	N/A
		6'	HC111-112	N/A	N/A	N/A	N/A	N/A
94-97	B-SERIES PICK UP	7'	HC11141	HC81741	HC81113	HC81641	HC81111	N/A
		6'	HC11142	HC81741	HC81113	HC81641	HC81111	N/A
86-93	B-SERIES PICK UP	7'	N/A	N/A	N/A	N/A	N/A	N/A
		6'	N/A	N/A	N/A	N/A	N/A	N/A
		CAB+	N/A	N/A	N/A	N/A	N/A	N/A
74-85	B-SERIES PICK UP	7'	N/A	N/A	N/A	N/A	N/A	N/A
		6'	N/A	N/A	N/A	N/A	N/A	N/A
NISSAN								
2022+	FRONTIER	72"	HC111-197	HC417-197	HC41113	HC416-197	HC41111	N/A
		TBA	TBA	TBA	TBA	TBA	TBA	TBA
05-21	FRONTIER	72"	HC111189	HC81789	HC81113	HC81689	HC81111	N/A
		59"	HC111190	HC81781	HC81113	HC81689	HC81111	N/A
00-04	FRONTIER	KING C 6'	HC11134	HC81734	HC81113	HC81634	HC81111	N/A
		CC 5'	N/A	N/A	N/A	N/A	N/A	N/A
86-97	HARDBODY	7'	N/A	N/A	N/A	HC81631	HC81111	N/A
		6'	N/A	N/A	N/A	HC81631	HC81111	N/A
		KING CAB	N/A	N/A	N/A	HC81631	HC81111	N/A
16-24	TITAN	6'	N/A	N/A	N/A	N/A	N/A	N/A
		5'	N/A	N/A	N/A	N/A	N/A	N/A
04-15	TITAN	KING C 6'	HC11191	HC81791	HC81113	HC81691	HC81111	HC81115
		CC 67"	HC11192	HC81791	HC81113	HC81691	HC81111	HC81115
TOYOTA								
22-24	TUNDRA	N/A	N/A	N/A	N/A	N/A	N/A	N/A
19-21	TUNDRA	ALL	N/A	N/A	N/A	N/A	N/A	N/A
14-18	TUNDRA	97"	HC111-149	HC817-123	HC81113	HC816-123	HC81111	HC81115
		78"	HC111-150	HC817-123	HC81113	HC816-123	HC81111	HC81115
		65"	HC111-151	HC817-123	HC81113	HC816-123	HC81111	HC81115
07-13	TUNDRA	98"	HC111-123	HC817-123	HC81113	HC816-123	HC81111	HC81115
		77"	HC111-124	HC817-123	HC81113	HC816-123	HC81111	HC81115
		66"	HC111-126	HC817-123	HC81113	HC816-123	HC81111	HC81115
99-06	TUNDRA	8'	N/A	N/A	N/A	HC81669	HC81111	N/A
		6'6"	N/A	N/A	N/A	HC81669	HC81111	N/A
16-24	TACOMA	74"	HC111-161	HC81793	HC81113	HC81693	HC81111	HC81115
		60"	HC111-162	HC81793	HC81113	HC81693	HC81111	HC81115
05-15	TACOMA	73"	HC111193	HC81793	HC81113	HC81693	HC81111	HC81115
		60"	HC111194	HC81793	HC81113	HC81693	HC81111	HC81115
95-04	TACOMA	7'	N/A	N/A	N/A	HC81659	HC81111	N/A
		72"	HC11160	HC81759	HC81113	HC81659	HC81111	N/A
01-04		61"	HC11160CC	HC81759	HC81113	HC81659	HC81111	N/A
All Years	HILUX Pick Up	Any Bed Length	N/A	N/A	N/A	N/A	N/A	N/A
83-88	T-100	Any Bed Length	N/A	N/A	N/A	N/A	N/A	N/A

HC81115 NO DRILLING REQUIRED / truck must be equipped with factory versatility track tiedown system

(*) RAILS ARE AVAILABLE WITHOUT AN INNER LIP / ADD -NL TO PART# (THIS WILL FIT WITH A PLYWOOD BED LINER)/ ADD -BF TO PART # (THIS WILL FIT WITH BAK FLIP)

Toyota versatility track mounting system

